



## Medical Treatment

If you need medical treatment, please contact the:

- Medical Centres  
(located on Main Campus and College Street Campus)
- First Aiders  
(details from your Manager/ Supervisor or School Office)



## Defibrillators

Defibrillators are used to administer an electric shock to a person who is having a cardiac arrest. They are designed to allow non-medical personnel to save lives.

Defibrillators are located in the following areas:

- Main Campus - beside telephones in reception atrium
- College Street Campus - across from porter's desk
- West Campus - in reception of ArchLabs Research & Innovation Centre
- Applied Technology Building - at porter's reception area.



## Useful Contact Numbers

|                        |            |
|------------------------|------------|
| Health & Safety Office | 051-845517 |
| Estates Office         | 051-302847 |
|                        | 051-302859 |
| HR Office              | 051-302050 |

### Medical Centres:

|                     |            |
|---------------------|------------|
| Main Campus         | 051-302873 |
| College Street      | 051-845671 |
| Barronstrand Street | 051-852999 |

|                             |               |
|-----------------------------|---------------|
| Emergency Services          | 999/112       |
| Ambulance Control           | 1890 499 299  |
| Waterford Regional Hospital | 051-873321    |
| Garda Síochána              | 051-874888    |
| Garda Confidential          | 1800 666 111  |
| Bord Gáis                   | 1850 20 20 20 |
| WIT Chaplain                | 051-302617    |
| WIT Counsellor              | 051-302475    |
|                             | 051-302878    |
| Student's Union             | 051-378390    |

## ADDITIONAL INFORMATION

Further information can be obtained from the:

Health & Safety Office  
Waterford Institute of Technology  
Cork Road, Waterford.

Tel: 051-845517  
Fax: 051-302711  
Email: [h&s@wit.ie](mailto:h&s@wit.ie)

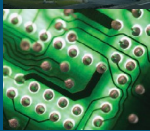
Waterford Institute of Technology  
Institiúid Teicneolaíochta Phort Láirge



# Health & Safety Leaflet

For all Staff, Students,  
Visitors and Contractors

*In the interest of ensuring your health and safety while at the Institute, please take the time to read this information carefully*



## Health & Safety Policy



It is the policy of Waterford Institute of Technology to promote high standards of health and safety within the Institute and to ensure that the best practicable methods of compliance with Safety, Health and Welfare legislation are achieved.

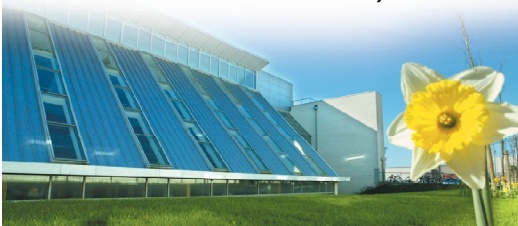
In addition to our commitment to the safety of our staff and students, it is our policy to ensure the safety of visitors and members of the public and to discharge our duties to contractors and others who may be affected by our activities.

The Institute undertakes to ensure that adequate resources are provided to implement the health & safety policy. The management team will therefore ensure that:

- Adequate resources are provided to ensure that proper provision can be made for health and safety.
- Adequate numbers of suitably trained personnel are available to undertake all work activities.
- Sufficient resources are available to provide necessary information and training with respect to health and safety.

All members of the Institute are expected to demonstrate their commitment towards a safe and healthy work and study environment by complying with the Institute's health and safety policy and associated procedures.

**Prof. Kieran R. Byrne** – Director



## Fire Safety

### Action on discovering a fire:

Raise the alarm by breaking a break glass unit (red square box with glass panel). To break, use your thumb to apply pressure on the black dot in the centre panel of a break glass unit.

### On hearing the fire alarm all building users must:

- ✓ Ensure the safe shutdown of equipment/electricity/gas in use
- ✓ Evacuate the building by the nearest exit route
- ✓ Close all doors after you
- ✓ Proceed to the assembly point
- ✗ Do not go upstairs for any reason
- ✗ Do not go to lockers/workstations etc to collect personal belongings
- ✗ Do not use the lift
- ✗ Do not re-enter the building until the "all-clear" has been given



## ASSEMBLY POINTS

Assembly points are located in the car park areas of each campus and are highlighted on the Fire Evacuation Notices throughout each building.

**KNOW YOUR ASSEMBLY POINT  
CHECK FIRE EVACUATION NOTICES**

## Accident Reporting

If you have an accident, report it immediately to one of the following:

- Your Manager/Supervisor
- Your Course Leader/Supervisor
- The Health & Safety Officer
- The Medical Centre

## Smoke Free Policy

The Institute is fully committed to establishing a healthy environment for all staff and students by introducing and maintaining a smoke-free policy.

Smoking is prohibited in all areas inside all buildings at the Institute

and

Smoking is prohibited in all Institute owned and/or leased vehicles.

